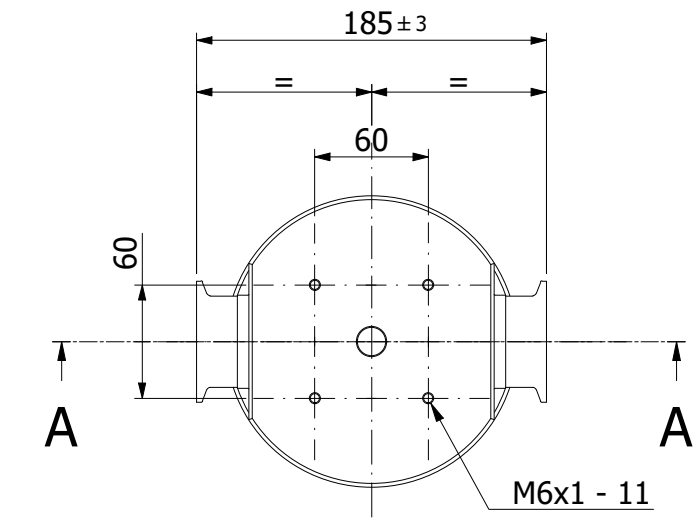
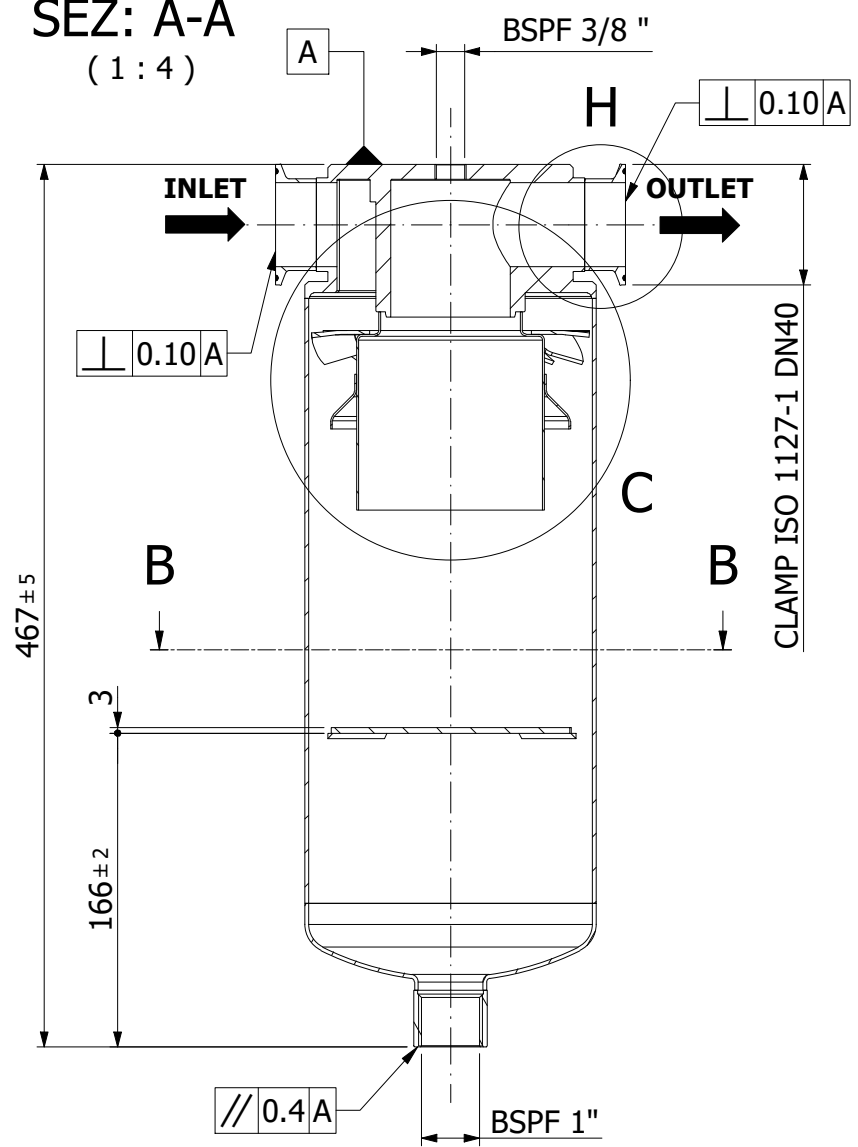
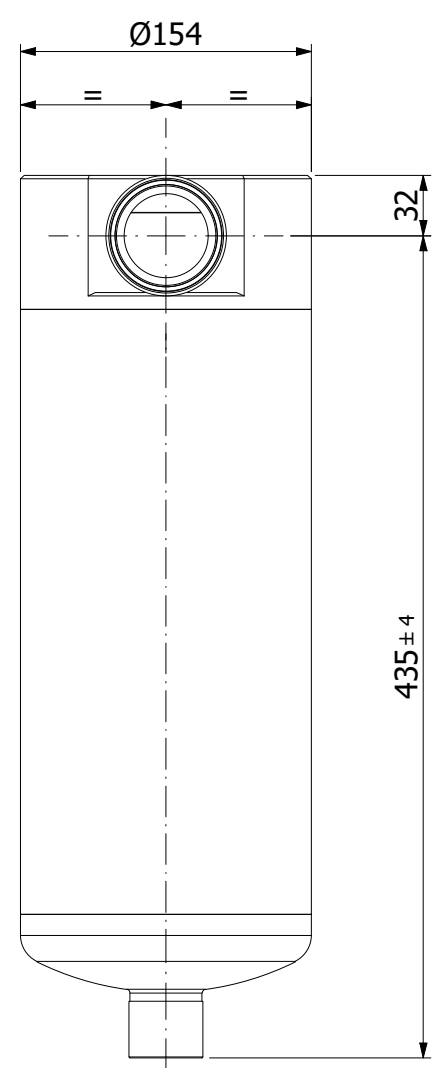
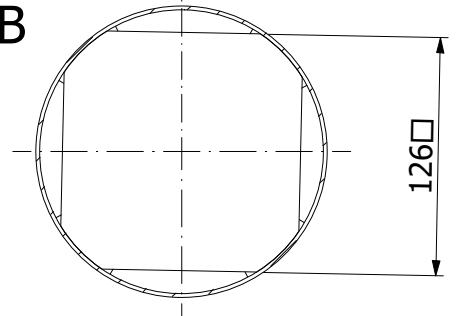


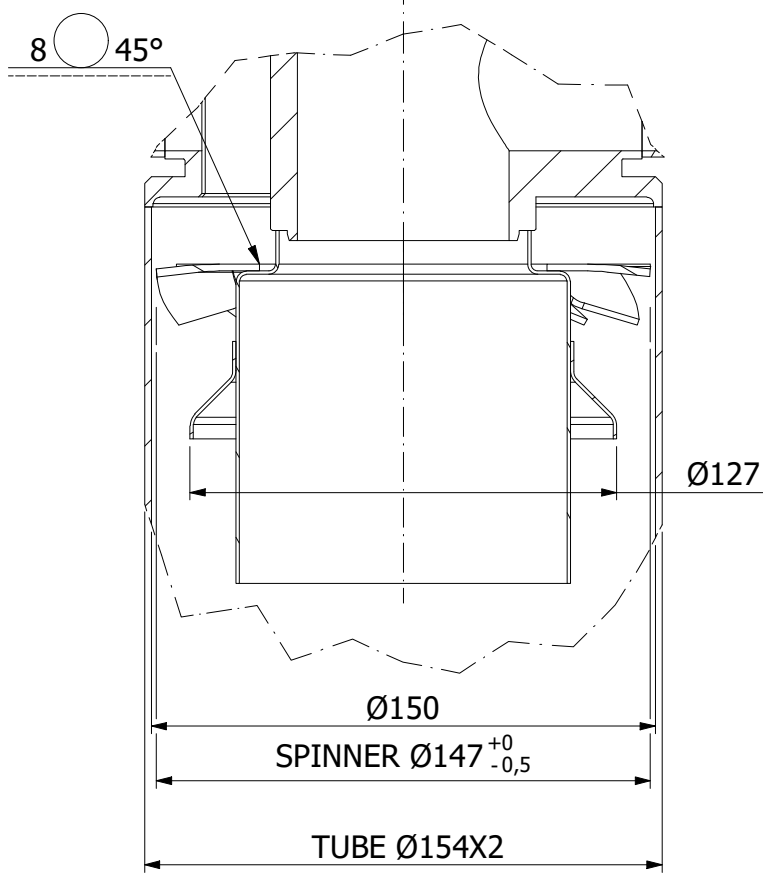
SEZ: A-A
(1:4)



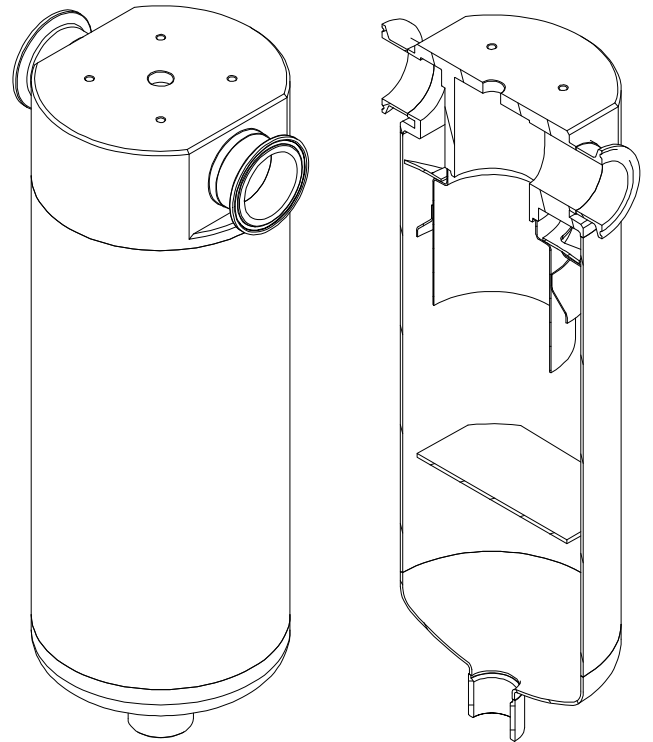
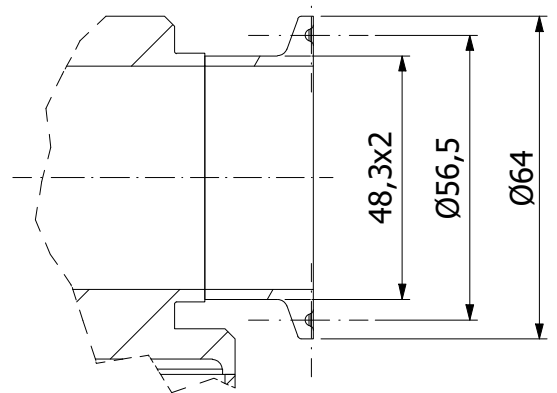
SEZ: B-B
(1:4)



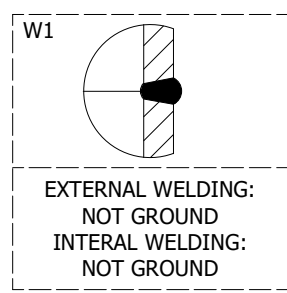
DET: C
(1:2.25)



DET: H
(1:1.5)



General tolerances:
UNI EN-ISO 22768-vL



EXAMPLE OF DATA LABEL

AVT® FILTER HOUSING

PART NUMBER
MODEL
TYPE
CATEGORY 2014/68/EU
VOLUME LITRES (V)
PS/TS
PS/TS
AMBIENT TEMPERATURE
TEST PRESSURE (PT) bar
PED FLUID GROUP (Art.13 - 2014/68/EU)
VESSEL MATERIAL
YEAR OF MANUFACTURE
VESSEL NUMBER

CE 0948

TECHNICAL DATA	
SERIES	STH
PED FLUID GROUP	GR.1 - GAS
PED CATEGORY	II
VOLUMES LITRES (V)	8,9
DESIGN CODE	EN 13445
WORKING CONDITION 1	PS +0/+16 bar TS +1.5/+100 °C
WORKING CONDITION 2	PS +0/+20 bar TS +1.5/+55 °C
AMBIENT TEMPERATURE	-20/+65 °C
TEST PRESSURE (PT)	29 bar
VESSEL MATERIAL	1.4404 (AISI316L)
EXTERNAL SURFACE	MIRROR POLISHED

Connection clamps must be chosen adequately to the risk analysis of the plant manufacturer

REV	REVISION DESCRIPTION	DATE	REVISED BY
07	CHANGED MODEL DESCRIPTION	30/03/2022	FOS
06	REVISED DATA LABEL, ADDED AMBIENT TEMPERATURE IN THE TECHNICAL DATA AND CHANGED WORKING CONDITION "TS"	03/03/2022	FOS
05	ADDED INLET AND OUTLET ARROWS, ADDED GENERAL TOLERANCE AND MOVED ARROW TO DETAIL "C"	08/02/2022	FOS
04	MODIFIED WELDING ZONE BETWEEN IMPINGER AND HEAD	30/04/2021	FOS
03	CHANGE IN/OUT CONNECTION TO CLAMP ISO1127-1, ADDED THREADED HOLE FOR SUPPORT	06/04/2021	FOS
02	GENERAL REVISION AFTER PROTOTYPES REALIZATION, ADDED VOLUME AND TOLERANCE	16/02/2021	FOS
01	PED CATEGORY ADDED AND ATEX REMOVED	19/01/2021	FOS

	MODEL STH013A-C	DRAWING NUMBER 590968	REVISION 07
	N° OF SHEET 1 of 1	RELEASING DATE 08/10/2020	SIGNATURE FOS

This document may contain confidential technical data, unauthorised use, copying, distribution to third parties, manufacture or reproduction in whole or in part prohibited.
WITHOUT RELEASING DATE THE DATA SHEET IS NOT VALID FOR PRODUCTION